

Welcome to What's new in Microsoft 2026 Release Wave 1 Power Platform

Thursday, 7th May 2026

We will kick off shortly

Before we get started...

- We are recording today's webinar and share it afterward.
- We will share the presentation, including relevant links.
- Feel free to ask your questions by writing in the chat.

What are the Release Waves

The two main updates on the Microsoft Dynamics 365 platform are called "waves".

Usually they occur in April (Wave 1) and October (Wave 2) and it is recommended that customers and partners have prior knowledge of the news and possible impacts.



March 18

Release plan/
documentation.



April 1

Possibility of applying the wave in
environments to evaluate the functionalities
or even to anticipate the update of the
production environment.



April 03

Starting with updates in
all environments,
including production.

Important notes:

- The date of the wave update can be brought forward to better suit customers' schedules but cannot be postponed;
- In addition to the waves, Microsoft makes small weekly updates between 9pm on Fridays and 6am on Saturdays;
- The Microsoft telemetry area triggers warnings about code usage, functionality, depreciated license to the Dynamics 365 and/or Power Platform admin email.
- <https://learn.microsoft.com/pdf?url=https://learn.microsoft.com/en-us/dynamics365/release-plan/2025wave2/toc.json>
- <https://learn.microsoft.com/pdf?url=https://learn.microsoft.com/en-us/power-platform/release-plan/2025wave2/toc.json>



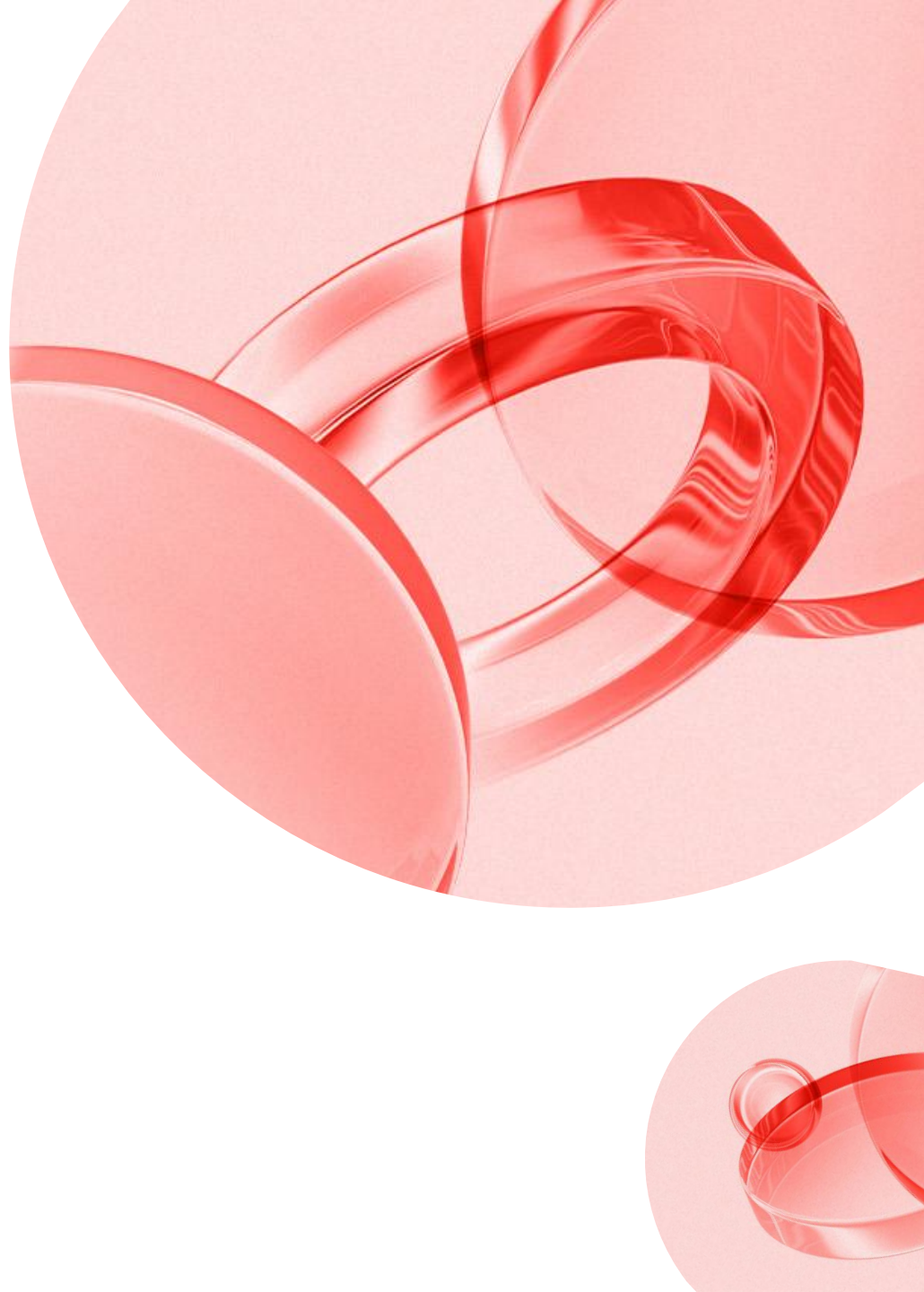
What's new on the Power Platform





Power Apps

 [Link to documentation](#)



Building modern apps

Power Apps

Item	N/U	Deadline	Benefits / Observations
Enhance row summaries in model-driven apps	UPDATED	June/2026	Row summaries now give you fast, AI-driven context for every record, right in your forms and grids. Set security roles to decide who can view each summary, so you control access and keep data secure. With expanded support for US Government clouds, more organizations can benefit from quick insights. See Microsoft-shipped summaries in grid views for the first time, making it easier to scan and act on important information. These improvements help you work efficiently and securely across all environments.
Use CLI to discover, create, and wire connectors in code apps	UPDATED	July/2026	<p>You can build richer, more complex code apps using manual development or coding agents, so your developers move faster from ideas to production. This shortens the path from ideation and prototyping to deployment, helping you deliver enterprise-ready apps sooner while saving development time and effort.</p> <ul style="list-style-type: none"> • Power Apps CLI connector commands <ul style="list-style-type: none"> • The Power Apps CLI adds new commands that let developers discover available connectors and create connections directly from the command line. • Agent and how-to guidance for prompt-to-app workflows <ul style="list-style-type: none"> • New code app agent.md files and code app how-to documentation show how coding agents can handle connector discovery and connection creation as part of end-to-end prompt-to-app workflows.
Download wrapped apps directly from Dataverse	NEW	April/2026	<p>Deliver your custom-branded apps faster by downloading them directly from Dataverse. No more Azure Blob Storage setup means less overhead and smoother distribution, especially for teams working in virtual networks.</p> <p>You can now download your custom-branded app binaries (APK, IPA, or AAB files) directly from Dataverse, removing the need for Azure Blob Storage.</p>
Enable online mode to access Dataverse for Canvas apps	UPDATED	May/2026	<p>Access the latest Dataverse data instantly in your offline-first canvas apps. No more waiting for syncs. Switch to online mode when connected and get real-time updates, so you can work faster and accomplish more every hour.</p> <p>When you turn it ON, your end users can open the offline status page and switch from Offline to Online.</p> <p>If you reopen in online mode and there's no network, you'll see a prompt to switch to offline mode.</p>

Building modern apps

Power Apps

Item	N/U	Deadline	Benefits / Observations
Enable push notifications in custom branded apps	NEW	May/2026	Push notifications are expanding beyond the Power Apps Mobile player to support custom-branded, white-label apps (wrapped apps). This feature gives makers a self-service, simplified way to configure push notifications in wrapped apps.
Enforce the modern, refreshed look in model-driven apps	UPDATED	April/2026	<p>What's changing: The modern, refreshed look becomes the required experience for all model-driven apps. This update removes the app setting New look for model-driven apps, so users can't revert back to classic look. All users see the modern look with no option to switch.</p> <p>Admin guidance: Review internal documentation, training, and screenshots to align with the modern look. If you maintain scripts or troubleshooting guides that reference the old toggle or admin settings, update those references.</p> <p>User impact: Users experience the modern look consistently across apps. No action is required from end users.</p>
Enhance search in grid filters and lookups	UPDATED	April/2026	<p>Grid column filters for lookup fields and lookup controls on forms in model-driven apps now use Dataverse search, replacing the older legacy search. This change delivers the following improvements:</p> <ul style="list-style-type: none"> • Contains-based matching: Users can enter any meaningful part of a name to find a record (for example, typing pharma returns Contoso Pharmaceuticals). • Fuzzy matching: Minor typos, spacing differences, or small variations surface the right records. • Hit highlighting: Search results now visually highlight matching portions of text, making it easier to understand why a result appeared and to confirm accuracy at a glance. • Faster performance: Searches use the same optimized Dataverse search index already deployed in the environment, significantly improving responsiveness. • Consistent app-wide behavior: Users get a familiar search experience across grid filters, lookups, global search, and other Dataverse search surfaces. • Reliable fallback: The legacy lookup search remains available as a fallback to ensure continuity in special scenarios.

Building modern apps

Power Apps

Item	N/U	Deadline	Benefits / Observations
Use generative pages globally	UPDATED	April/2026	Generative pages can now be created and used in any supported global region, expanding availability beyond the current US-only footprint. Makers working in different parts of the world can now instruct generative tools to produce pages that reflect the languages and formatting styles their users expect. To support this, makers might need to specify which languages the page should support and how to fetch user preferences for language, number, and date formatting. This allows generated pages to display using the user's preferred language and formatting, including supporting different reading directions for particular languages.
Configure offline profiles using FetchXML editor	UPDATED	May/2026	<p>FetchXML editor gives makers advanced control and flexibility to build optimized, maintainable offline profiles that go beyond the limitations of the Expression Builder. They enable more precise queries, better performance, and improved collaboration.</p> <p>You can now open the FetchXML editor directly within Power Apps Studio, making it easier to customize data filters for offline profiles without switching tools.</p>
Build generative pages using external codegen tools	NEW	February/2026	<p>Building and iterating on generative pages becomes dramatically easier and more flexible when makers can use the coding environments and AI coding assistants, they rely on daily. Today, generative pages are created inside the Power Apps Studio experience, with tedious copying and pasting of code required to utilize other coding tools and assistants.</p> <p>With this update, makers can now work entirely from within their preferred AI coding tools, such as GitHub Copilot or Claude Code, to create, refine, and deploy generative pages for model-driven apps. Instead of switching between Power Apps Studio and a code editor, developers can connect directly to their Dataverse environment from inside the codegen tool.</p>
Supervise autonomous agents with agent feed	UPDATED	May/2026	Agent feed is a task panel embedded in model-driven apps in Power Apps that keeps humans informed and in control of autonomous agent activity. The feed is organized into two sections: Needs attention for tasks requiring human action, and Completed for resolved work, plus an Insights panel showing collaboration trends over time. Users can filter the feed by status, by the record they are currently viewing, or view all tasks in a single combined list.

Copilot for Power Apps makers and users

Power Apps

Item	N/U	Deadline	Benefits / Observations
Direct SharePoint List Integration for the new Power Apps experience	NEW	April/2026	<p>This feature gives makers flexibility to work seamlessly in the new Power Apps vibe experience with SharePoint lists as a source for their data. It accelerates time to value, reduces duplication, ensures data stays governed under existing SharePoint policies, and simplifies collaboration by keeping data in familiar environments.</p> <p>In the multi-agent new Power Apps vibe experience, makers can use SharePoint lists as primary data sources. Add an existing list by selecting the SharePoint site and list through a secure connection. After you add the list, the app stays connected through the SharePoint connector, enabling users to create, read, update, and delete list data directly from the app.</p>

Enable enterprise scale

Power Apps

Item	N/U	Deadline	Benefits / Observations
<p>Discover what's driving engagement with the Usage page</p>	<p>UPDATED</p>	<p>May/2026</p>	<p>The Usage page in the Power Platform admin center helps you identify the top resources in your organization that are driving success and spot adoption trends, such as usage spikes for apps, flows, and agents. At the top of the page, you will find a summary view showcasing the adoption trends over time, as well as the resources that are driving the most value. You'll be able to see metrics that include:</p> <ul style="list-style-type: none"> • Top apps by user activity • Top flows by run volume • Top agents by session count <p>Below the summary view, detailed tables provide sortable views of all apps, flows, and agents that are in use in your organization.</p>



Power Automate



[Link to documentation](#)



Cloud flows

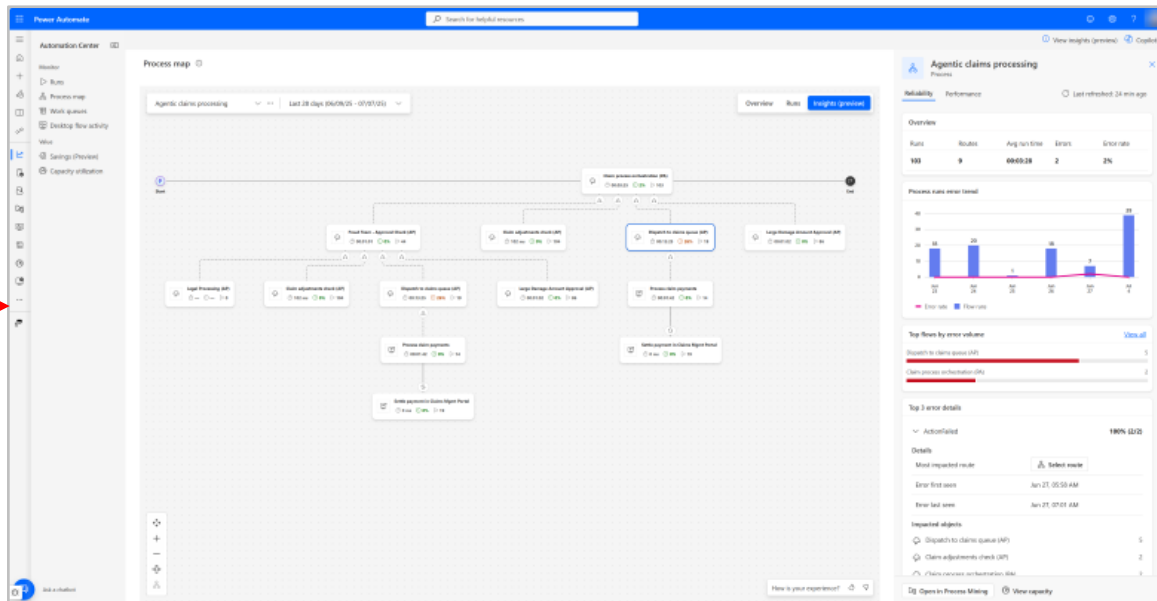
Power Automate

Item	N/U	Deadline	Benefits / Observations
Restore accidentally deleted flows	UPDATED	June/2026	<p>With the introduction of the ability to restore accidentally deleted flows directly from the portal, organizations gain a powerful tool to maintain business continuity and minimize operational disruptions.</p> <p>This feature enables users to restore accidentally deleted flows directly from the portal, provided the restoration occurs within the designated timeframe. This capability is available to flow owners, co-owners, and environment administrators.</p>
View property value expanded inline in the new cloud flow designer	UPDATED	June/2026	<p>You can be more efficient when authoring or debugging flows by using the inline view to examine property values from multiple steps at once without needing to select each step separately.</p> <p>Makers automatically turn on this feature.</p> <p>You don't need technical knowledge to use this feature. When you add an action, you can view property values for multiple steps at design time or output values for multiple steps at runtime. The feature shows all that information inline by default.</p>
Share Process license capacity across workflows	UPDATED	April/2026	<p>Save costs, reduce management effort, and improve resource utilization by efficiently sharing capacity across multiple flows.</p> <p>With flow groups, you can share Process license capacity across up to 25 cloud flows, optimizing license allocation and reducing costs for organizations operating higher-volume workflows that don't need their own dedicated capacity.</p>

Cloud flows

Power Automate

Item	N/U	Deadline	Benefits / Observations
<p>Enable process mining integration in process map</p>	<p>UPDATED</p>	<p>March/2026</p>	<p>Access flow-centric health and performance metrics directly within the process map, and enable seamless, one-click process mining integration for advanced analysis. Built-in process mining provides instant variant analysis, allowing you to quickly identify slow or unreliable routes and uncover process variations.</p> <p>Standard insights available without process mining integration:</p> <ul style="list-style-type: none"> • Flow runs and performance metrics. • Failure rates with error trends. • Top errors by code. • Unlock process mining insights with a one-click experience—no manual log data wrangling or transformation needed. • Visualize and drill down into specific process routes (variants) and bottlenecks with variant analysis.



Copilot for Power Automate

Power Automate

Item	N/U	Deadline	Benefits / Observations
<p>Improved Power Automate licensing dashboard</p>	<p>UPDATED</p>	<p>May/2026</p>	<p>The updates to the Power Automate licensing page in the Power Platform admin center include a new consolidated layout, additional details on license consumption, and other improvements to help administrators optimize their license costs and usage.</p> <p>Updates include:</p> <ul style="list-style-type: none"> • Comprehensive view of user and capacity licenses consumption: Understand top users, usage trends, and daily flow capacity utilization. Previously, consumption details for Power Automate Process and other capacity licenses were available on the environment level, but not in Power Platform admin center. • Management for Power Automate Process, Hosted Process, Process Mining add-on, and other add-on licenses. • Insights and recommendations for users missing licenses or over capacity.

Desktop flows

Power Automate

Item	N/U	Deadline	Benefits / Observations
<p>Capture a VM image on a hosted machine to use as a template</p>	<p>UPDATED</p>	<p>September/2026</p>	<p>With the virtual machine (VM) image capture capability, you can capture a VM image that you customize on a hosted machine.</p> <p>When you capture a VM image, you can reuse the custom VM image to provision other hosted machines or hosted machine groups. The capture process includes:</p> <ul style="list-style-type: none"> • Snapshot: Captures the VM's disk at a specific point in time. • Generalization: Removes machine and user-specific information from the VM for reuse. • Storage in your Azure Compute Gallery: Stores the VM image so Power Automate services can use it.
<p>Enable version control for desktop flows</p>	<p>UPDATED</p>	<p>September/2026</p>	<p>With version control in Power Automate for desktop, you can see what changes were made and who made them. This feature makes it easier to debug issues and fix problems. Version control helps your automations run more efficiently, accurately, and compliantly.</p> <p>Feature Details</p> <ul style="list-style-type: none"> • Desktop flows have versions. Each time you open a flow, you can make changes and save drafts until you decide to publish the flow. • The version history in the flow designer for Power Automate desktop shows who made the changes and when. • You can compare changes between the current version and a previous version or between any two versions you select. • In the console for Power Automate desktop, the context menu includes a version history option. This option shows version information in the properties window of the desktop flow.

Desktop flows

Power Automate

Item	N/U	Deadline	Benefits / Observations
Build better forms with integrated Power Apps	UPDATED	July/2026	<p>Enabling full Microsoft Power Apps experiences inside desktop flows delivers a major step forward in how users interact with attended robotic process automation (RPA). This feature reduces cost and complexity, eliminates brittle UI instrumentation, and provides a cohesive Power Platform–native form experience that can run locally during automation execution.</p> <p>With Integrated Power Apps, makers can now:</p> <ul style="list-style-type: none"> • Invoke apps directly from a desktop flow: When the action runs, the app opens on the user’s PC and provides a modern, fully customizable UI. • Pass inputs from the desktop flow into the app: Prefill context, state, or values into the form to guide the user’s task. • Capture outputs from the app back into the flow: Use user-entered form data to drive downstream automation logic. • Trigger sub-flows from app events: Button clicks or other in-app events can execute sub-flows, enabling event-driven automation patterns rather than strict linear flows.
Test subflows with test suite	UPDATED	June/2026	<p>Validating desktop flows end-to-end is difficult when you can’t test subflows independently.</p> <p>The Power Automate desktop test suite enhancement expands the Power Automate desktop testing framework to support creating and running test cases for subflows. Makers can define inputs, expected outputs, and assertions at the subflow level, following the same behavior-driven development (BDD) structure used for desktop-flow test cases. The framework records results and error details in the console and designer.</p>

Desktop flows

Power Automate

Item	N/U	Deadline	Benefits / Observations
Reference previous prompts in Copilot for Power Automate desktop	UPDATED	May/2026	<p>Copilot in Power Automate for desktop now supports contextual memory, so you can build flows by referencing previously provided prompts. This feature eliminates repetitive input and makes automation creation more intuitive and efficient.</p> <p>Key features and benefits:</p> <ul style="list-style-type: none"> • Contextual Understanding: Copilot retains details from earlier prompts, such as file paths, parameters, or objects, for seamless reuse. • Efficiency: Simplifies complex workflows by removing the need to retype information across multiple steps. • Improved Accuracy: Ensures consistency and minimizes errors by accurately referencing previous inputs. • Intuitive User Experience: Facilitates smoother, smarter automation creation with minimal effort.
Use Power Platform environment variables in desktop flows	UPDATED	February/2026	<p>Retrieve Power Platform environment variables directly through their desktop flows without the need to pass them as inputs to the flow.</p> <p>A new Power Automate for desktop action enables you to retrieve Power Platform environment variables through your desktop flows. This action fetches all environment variables currently available in the Power Platform environment containing the desktop flow so you can pick one to use in your flow. The variable's value dynamically resolves during runtime based on the value that the environment variable is configured to have in that environment.</p>

Process mining

Power Automate

Item	N/U	Deadline	Benefits / Observations
<p>Create and visualize custom KPIs in the process intelligence experience</p>	<p>UPDATED</p>	<p>May/2026</p>	<p>Custom KPIs put your unique business priorities at the center of process analysis. The process intelligence experience allows flexible metric creation with seamless visualization integration. This feature enables you to define custom KPIs and metrics tailored to specific business requirements within the process intelligence experience.</p> <p>Key capabilities include:</p> <ul style="list-style-type: none"> • Custom metric creation: Build new KPIs using an intuitive formula editor that supports calculations based on case attributes, event data, timestamps, and existing metrics. • Editing and management: Modify, refine, or delete custom metrics as business needs evolve, with changes automatically reflected across all visualizations using those metrics. • Native visualization support: Integrate custom KPIs seamlessly into all process intelligence experience tiles and components. Display them in process maps, trend charts, statistical breakdowns, and comparative analyses just like standard metrics. • Business-specific measurements: Define metrics that reflect your unique business context, such as weighted performance scores, custom cost calculations, compliance rates, or domain-specific efficiency ratios. • Reusability: Reuse custom KPIs throughout the process intelligence experience, applying them to filters and analysis scenarios.
<p>Enable Process Intelligence Studio in object-centric process mining</p>	<p>UPDATED</p>	<p>June/2026</p>	<p>Process Intelligence Studio eliminates the friction between your questions and your answers. Is a modern, flexible workspace designed for comprehensive process analysis. It provides a fully customizable analysis environment that combines multiple visualization and analysis components into cohesive, purpose-built workspaces. Core capabilities include:</p> <ul style="list-style-type: none"> • Tab-based navigation: Organize related analyses into separate tabs within a single workspace, maintaining context while exploring different perspectives or process segments. • Flexible layouts: Arrange tiles in customizable grid layouts, allowing you to position process maps, charts, tables, and metrics exactly where you need them for optimal visibility and comparison. • Powerful tiles: Choose from a comprehensive library of visualization and analysis components—process map, performance metrics, attribute breakdowns, case lists, and statistical views. • Unified filtering: Apply filters once and have them cascade across all tiles in your workspace, ensuring consistency and enabling rapid scenario comparison without manual reconfiguration. • Object-centric support: Extends full functionality to OCPM models, enabling multi-dimensional analysis of interconnected objects, relationships, and cross-object metrics within the same intuitive interface.

Process mining

Power Automate

Item	N/U	Deadline	Benefits / Observations
Export object-centric process mining data to Microsoft Fabric semantic model	UPDATED	June/2026	<p>This feature allows seamless integration with Microsoft Fabric for enterprise-wide analytics. It enables direct publishing of object-centric process mining (OCPM) results into Microsoft Fabric semantic models, making process intelligence data available throughout the Microsoft analytics ecosystem.</p> <p>Key capabilities include:</p> <ul style="list-style-type: none"> • Semantic model publishing: Export OCPM analysis results, including objects, events, relationships, and attributes, directly to Fabric as structured semantic models. • Multi-object support: Preserve the rich, object-centric structure of your process data, maintaining relationships between different object types (orders, deliveries, invoices, and more) in the published model. • Metric preservation: Transfer KPIs and metrics from your process analysis, making them available as measures within the Fabric semantic model. • Power BI integration: Access published semantic models immediately in Power BI for report creation, dashboard development, and custom visualization. • Data refresh synchronization: Configure publishing schedules to keep Fabric semantic models current with your process mining data updates. • Enterprise connectivity: Combine process intelligence data with other Fabric data sources, enabling unified analytics across operational, financial, and customer domains.
Analyze processes using object-centric process mining	UPDATED	May/2026	<p>Real business processes rarely flow as a single, linear instance. Events routinely touch several objects of different types at the same time (for example, creating an invoice for a specific order, or shipping a package that contains items from multiple orders). Here's the key idea: Instead of "one case → one sequence of activities," object-centric process mining lets one event belong to multiple objects (and object types), keeping the full context intact. Object-centric process mining support in Power Automate Process Mining allows you to:</p> <ul style="list-style-type: none"> • Easily ingest your object-centric event logs from Azure Data Lake or OneLake. • Map object and event-level attributes to unlock detailed analytical opportunities. • Visualize your object-centric process in an understandable, customizable, and easy-to-read process map. • Visualize key metrics in a comprehensive process overview. • Analyze your process from process execution and throughput time viewpoint. • Focus on specific process areas by using filters or by specifying a particular path in the Process Analysis widget.

Process mining

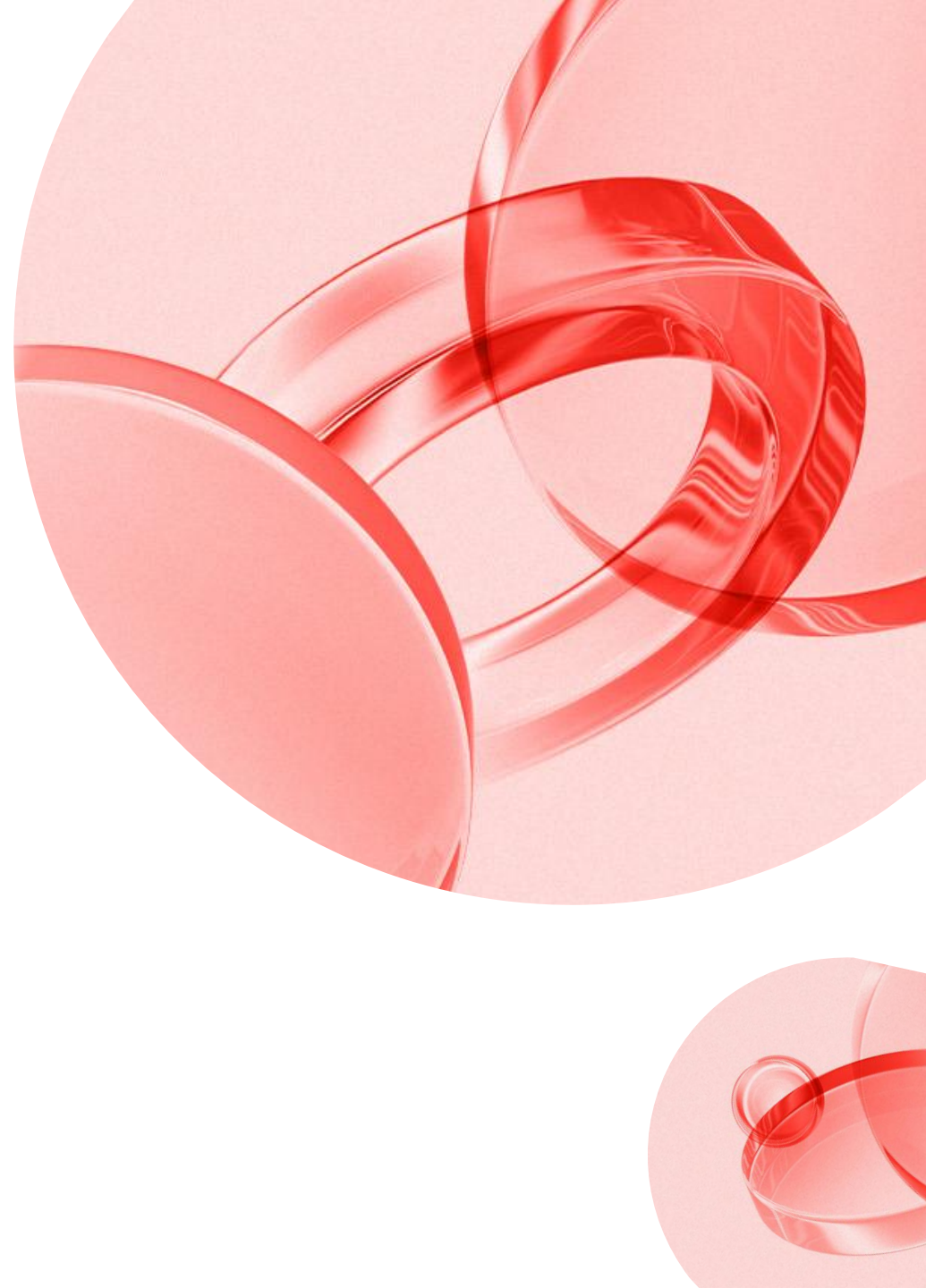
Power Automate

Item	N/U	Deadline	Benefits / Observations
Analyze your processes in the process intelligence experience	UPDATED	May/2026	<p>The process intelligence experience is a modern, flexible workspace designed for comprehensive process analysis. It provides a fully customizable analysis environment that combines multiple visualization and analysis components into cohesive, purpose-built workspaces. The platform empowers users to construct exactly the analytical view they need without technical complexity. Core capabilities include:</p> <ul style="list-style-type: none"> • Tab-based navigation: Organize related analyses into separate tabs within a single workspace, maintaining context while exploring different perspectives or process segments. • Flexible layouts: Arrange tiles in customizable grid layouts, allowing you to position process maps, charts, tables, and metrics exactly where you need them for optimal visibility and comparison. • Powerful tiles: Choose from a comprehensive library of visualization and analysis components—process maps, variant analysis, performance metrics, attribute breakdowns, case lists, and statistical views. • Unified filtering: Apply filters once and have them cascade across all tiles in your workspace, ensuring consistency and enabling rapid scenario comparison without manual reconfiguration.
Get support for normalized schema import for data ingestion	UPDATED	May/2026	<p>Customers with existing data pipelines or data products in data mesh mostly want to stick to normalized, efficient forms such as star schema. Power Automate Process Mining currently requires you to transform the event log into a single-table form, where attributes with small cardinality are duplicated. Support for star schema reduces storage volumes and speeds up ingestion performance.</p> <p>Most systems of record have data stored in data structures that allow you to easily extract information about the analyzed entity (case-level data) and historical changes on those entities (event-level data). The attributes are also stored in a normalized form. The single-table approach to event log creation requires you to do inefficient transformations. With this feature, Power Automate Process Mining supports the case-event entity-based data structure plus a normalized form of attributes. This speeds up the ingestion process in both the transformation and import to process model phases and reduces the storage capacity needed.</p>



Copilot Studio

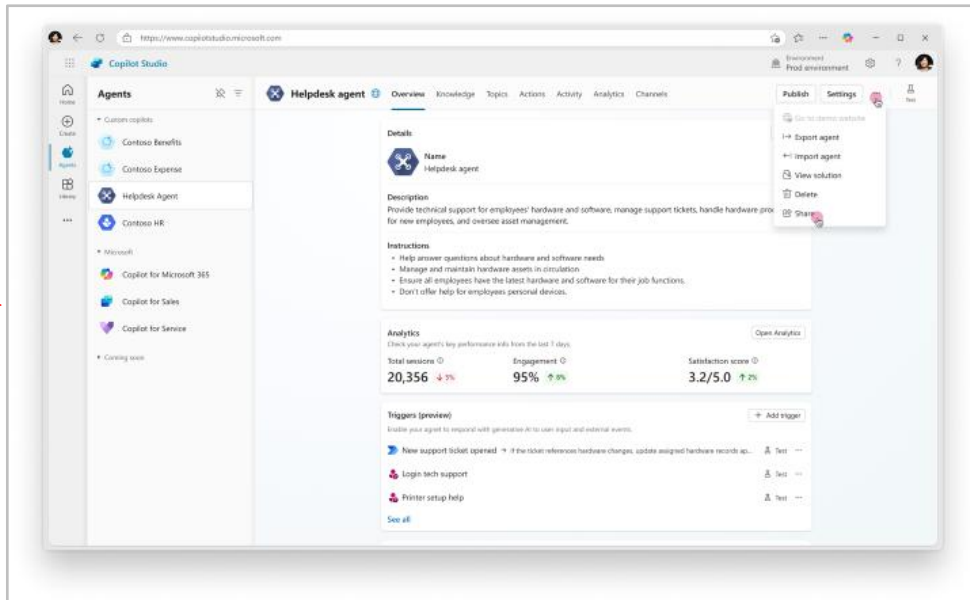
 [Link to documentation](#)



Copilot and AI innovation

Copilot Studio

Item	N/U	Deadline	Benefits / Observations
<p>Configure triggers with end-user credentials</p>	<p>UPDATED</p>	<p>July/2026</p>	<p>Makers can now manage triggers natively in Copilot Studio and securely share autonomous agents that run with end-user credentials.</p> <p>With this feature, you can create triggers for autonomous agents that run with end users' credentials. You can build an agent that operates entirely in the background, triggered by external events, and share it with end users so they can configure the agent to run on their behalf.</p> <p>As a maker, you can:</p> <ul style="list-style-type: none"> • Create an agent and add a trigger. • Configure the trigger with end-user credentials. • Publish and share the agent with end users. • Once configured and enabled by end users, the agent begins to operate on their behalf.



Copilot and AI innovation

Copilot Studio

Item	N/U	Deadline	Benefits / Observations
<p>Define custom metrics for analytics</p>	<p>UPDATED</p>	<p>June/2026</p>	<p>Makers can measure agent performance and return on investment (ROI) tailored to your organization's requirements and policies, thus ensuring business insights and decision-making are in line with your organization's approach.</p> <p>This capability complements existing savings analytics by allowing makers to define, measure, and iterate on custom metrics for Microsoft Copilot Studio agents.</p> <p>For example, a customer service team might need to understand how effectively an agent supports sales conversations. A maker can define a custom metric called "Sales Conversion Rate" with result categories such as Converted and Not converted.</p> <p>Makers define each metric and its possible result categories. To activate custom metrics, makers add a new metric from the Analytics page in Copilot Studio.</p>
<p>Get Microsoft 365 Copilot agent suggestions based on your work in Copilot Studio</p>	<p>UPDATED</p>	<p>June/2026</p>	<p>Suggested agents use your Microsoft 365 Copilot memory to recommend agents that align with how you work.</p> <p>When you create a new agent in Copilot Studio, the system analyzes your past interactions and prior Copilot usage to identify common tasks and workflows. Based on this analysis, Copilot Studio suggests up to three agents for Microsoft 365 Copilot, designed specifically for you. How it works:</p> <ul style="list-style-type: none"> • Copilot Studio securely analyzes the maker's Microsoft 365 Copilot memory, respecting privacy and compliance boundaries. • An offline process periodically generates up to three suggested agents for the maker, ranked by relevance. • The maker receives an email notification when new suggested agents are available, with direct links to view them in Copilot Studio.
<p>Automate web and desktop apps with computer use</p>	<p>UPDATED</p>	<p>May/2026</p>	<p>When you enable this feature, agents can quickly automate repetitive tasks in websites and desktop applications. This capability reduces manual effort, minimizes errors, and saves valuable time and resources.</p> <p>With this feature, agents complete tasks even when no API is available. It's useful for automated data entry, invoice processing, and data extraction.</p> <p>Computer use runs on Computer-Using Agents (CUA), an AI model that combines computer vision and reasoning to navigate and interact with GUIs. It adapts to interface changes, so it continues working even if buttons or layouts shift. Best of all, it requires no coding—just plain language instructions.</p>

Copilot and AI innovation

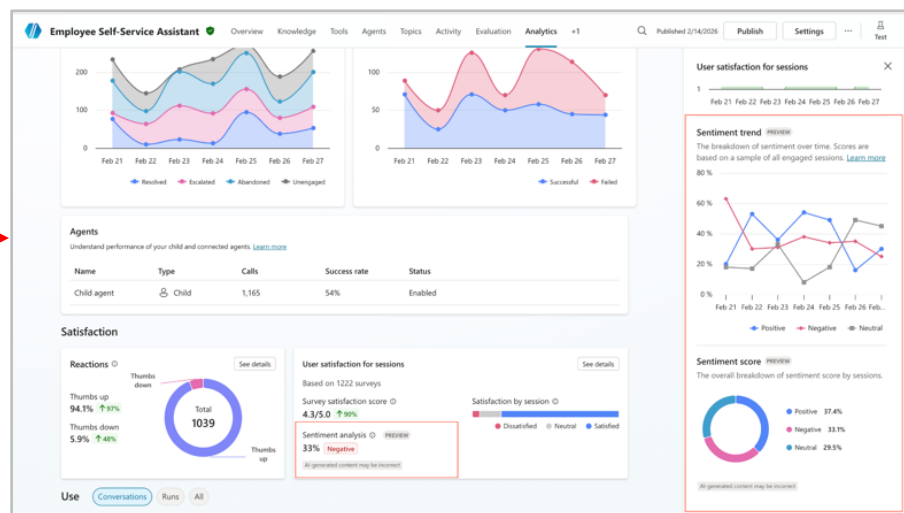
Copilot Studio

Item	N/U	Deadline	Benefits / Observations
See evaluation results in real time	NEW	May/2026	<p>This feature enables real-time streaming and visualization of evaluation results while an evaluation run is still in progress.</p> <p>Instead of waiting for the entire test set to complete, makers can monitor execution dynamically and take action based on live signals.</p> <p>What makers gain:</p> <ul style="list-style-type: none"> • View real-time execution progress. • See per-test results as they are processed. • Identify failures, grading issues, or unexpected behavior immediately. • Monitor long-running evaluations without refreshing or restarting.
Use code interpreter on SharePoint sources in agent conversations	UPDATED	May/2026	<p>Code interpreter enables Copilot Studio agents to generate and execute Python code when needed to respond to user prompts. Code interpreter supports tasks such as data preparation, statistical analysis, table joins, forecasting, and chart generation. These tasks work with structured files like CSV and Excel. Code interpreter supports the GPT-4.1 model. Using code interpreter for agents:</p> <ul style="list-style-type: none"> • Unlocks trustworthy analysis inside agents and prompts by employing deterministic, reproducible computation instead of best-effort large language model (LLM) reasoning for data questions. • Lowers the skill barrier for advanced analytics by letting users ask analytical questions in natural language. • Generates tables and visualizations of results programmatically that users can see, download, and reuse. • As an uploaded file in an agent chat. • As a referenced knowledge source in a SharePoint documents library.
Analyze quality of responses that use generative AI	UPDATED	March/2026	<p>Get insights into the quality of your knowledge sources and how well the agent responds to different types of questions. With this information, you can better serve your agent users. The feature uses AI to check if the quality of the agent's response is good or poor. The feature analyzes a sample set of generative AI questions. It doesn't require enablement; however, it is available only for questions that use Generative Answers. Makers see a visual indicator that shows the breakdown of answered generative AI questions between good and poor quality. Makers can view the reasons for poor quality responses. They can see if the response isn't fully relevant, is incomplete, or isn't fully grounded.</p>

Copilot and AI innovation

Copilot Studio

Item	N/U	Deadline	Benefits / Observations
Analyze user sentiment from agent conversations	NEW	March/2026	<p>Understanding the overall customer sentiment during conversations with your agent provides valuable insight into customer satisfaction. Copilot Studio uses AI models to analyze tone, language, and user interactions throughout the conversation to calculate an overall sentiment score. The new sentiment analysis is an additional metric to understand customer satisfaction. There is already the customer satisfaction (CSAT) score that is based on the user rating at the end of sessions.</p> <p>Sentiment analysis helps you quickly identify sessions with negative sentiment, enabling you to investigate issues and continuously improve your agent's performance.</p>
Evaluate the use of tools and topics	NEW	March/2026	<p>The tool and topic invocation grader verifies that an agent invoked the needed tools or topics during an evaluation. How it works:</p> <ul style="list-style-type: none"> • Makers define a list of mandatory tools or topics per run. • During execution, the grader checks whether the specified items were invoked. • Detection of missing or broken tool calls. • Validation of routing and orchestration flows. • Early identification of behavior regressions. • Clear feedback indicating which tools or topics weren't invoked.



Copilot and AI innovation

Copilot Studio

Item	N/U	Deadline	Benefits / Observations
Generate test inputs from conversations and reactions	NEW	March/2026	<p>This capability enables makers to generate structured evaluation inputs directly from real production conversations.</p> <p>Instead of manually crafting synthetic test cases, makers can convert historical interactions into reusable evaluation datasets.</p> <p>Makers can generate the inputs from:</p> <ul style="list-style-type: none"> • Conversation themes • User reactions <p>What makers gain:</p> <ul style="list-style-type: none"> • Evaluation scenarios that reflect real-world behavior. • Faster test set creation. • Broader coverage of edge cases. • Continuous alignment between production usage and evaluation practice.
Give read-only analytics access to users	NEW	March/2026	<p>Sharing an agent means providing full editing privileges on the agent and environment maker security role, which is likely more control than what your analysts, business stakeholders, or operations leads simply need to see how the agent is performing.</p> <p>The Analyst role lets agent owners share an agent with a user as an Analyst, granting limited read-only access to the Analytics pages. When the Analyst role is assigned, the system creates a new Dataverse Bot Viewer role and adds the user to the existing agent's access team, providing scoped read permissions on the relevant bot component.</p> <p>Analysts can view analytics for that agent, but can't edit, configure, or otherwise make changes to the agent.</p>
Analyze the business impact of agents in Viva Insights	UPDATED	January/2026	<p>You can now analyze the business impact of your Microsoft Copilot Studio agents directly in Viva Insights. This feature gives you a consolidated report that shows usage and business impact trends across all your published Copilot Studio agents. You see key stats like hours saved, usage analysis, and resolution rate at the tenant level. You can drill down to view stats for each agent. The report uses regular usage data that Copilot Studio sends to Microsoft 365.</p> <p>By default, this feature is enabled if you meet the following criteria:</p> <ul style="list-style-type: none"> • You have at least 50 Microsoft 365 Copilot licenses (standalone or bundled with Viva Insights). • You publish at least one Copilot Studio agent in a production environment.

Copilot configuration

Copilot Studio

Item	N/U	Deadline	Benefits / Observations
Enforce safe sharing by detecting credential oversharing	UPDATED	June/2026	<p>When creating agents, Makers may inadvertently use credentials that rely on maker or system credentials not intended for reuse. When they publish the agent, users of the agent may have access to assets they're not intended to access.</p> <p>To help enforce the use of safe publishing and sharing policies, the oversharing detection and policy enforcement platform in Copilot Studio:</p> <ul style="list-style-type: none"> Identifies agents that use connections marked as not safe for sharing. Surfaces clear guidance through inventory and advisor signals. Enables admins to block publishing or sharing of unsafe assets before exposure occurs.
Strengthen security of Copilot Studio agents with additional threat protection	UPDATED	June/2026	<p>The extended threat protection feature for Copilot Studio custom agents gives organizations the flexibility to choose how they secure their agents against advanced threats. Customers can select Microsoft Defender, integrate with other trusted security partners, or develop and connect their own custom monitoring solutions. Enabling external threat protection: There are 3 steps for enabling the feature:</p> <ol style="list-style-type: none"> Register a Microsoft Azure Entra application: A Power Platform Administrator creates an Azure Entra app to securely authenticate between Copilot Studio and the chosen external security provider. This can be done using a provided PowerShell script or manually through the Azure portal. As part of the configuration of the app, you will need to provide a unique endpoint, provided to you by your security provider of choice. Authorize the Entra application: Make sure the external security provider has your Azure Entra application ID, and can authenticate with it. This step varies between security providers. Ask your provider of choice how to authorize your application with their system. Configure integration in Power Platform Admin Center The administrator enters the Azure Entra app details and the endpoint from the security partner in the Admin Center's threat detection settings. Once enabled, Copilot Studio shares only the necessary runtime data with the external provider for real-time decision-making. The integration can be disabled at any time if requirements change.

Copilot configuration

Copilot Studio

Item	N/U	Deadline	Benefits / Observations
Add SharePoint lists as a knowledge source	UPDATED	May/2026	<p>You can now include SharePoint lists within a SharePoint site as a knowledge source for your agents.</p> <p>SharePoint lists provide extra grounding for agents in several scenarios. Generative answers can include relevant results from SharePoint lists.</p> <p>Makers add SharePoint as a knowledge source to use SharePoint lists. Then, they select relevant lists from recent lists or my lists.</p> <p>When you select a specific list, the agent can access all rows and columns. Access follows the access control list (ACL) restrictions you set for the SharePoint list.</p>
Group files with instructions to guide agent answers	UPDATED	May/2026	<p>File groups empower makers to deliver more precise, context-aware answers by organizing related documents into a unified knowledge source. This improves agent performance, reduces irrelevant responses, and enhances user trust.</p> <p>With file groups, makers can group up to 500 files into a single knowledge source. In addition to the ability of adding variable-based instructions, agents can narrow their scope of search when queried about relevant and related data.</p> <p>The ability to query over a collection of files enables the extension of query scenarios to include proper determination of content.</p>

Core authoring

Copilot Studio

Item	N/U	Deadline	Benefits / Observations
<p>See a unified view of errors, warnings, and governance notifications</p>	<p>UPDATED</p>	<p>June/2026</p>	<p>Agent Status is a new section in the Overview tab that centralizes all errors, warnings, and governance notifications in one place, giving makers a clear, consistent understanding of their agent's state.</p> <p>In parallel, governed components that are not allowed by policy are visually greyed out, with inline explanations of what is blocked and why, so makers understand constraints as early as possible - before investing time and hitting setup or publishing dead ends.</p>
<p>Build enhanced connectors with the Power Platform Connector SDK and PowerFx</p>	<p>UPDATED</p>	<p>May/2026</p>	<p>Power Platform connectors play a critical role in allowing makers to build low-code apps, workflow automation, and AI agents. They provide seamless connectivity to various data sources.</p> <p>With this feature, you can build enhanced Power Platform connectors on top of structured data. These connectors enable makers to use Power Fx when building apps and use knowledge sources in agents built in Copilot Studio.</p> <p>The Power Platform Connector SDK for structured data enables developers to create a Web API that provides structured data. You can register the Web API as a connector in any Power Platform environment. When you register the Web API, you automatically enable the enhanced experience for makers.</p>
<p>Build Power Platform connectors with OpenAPI v3</p>	<p>UPDATED</p>	<p>May/2026</p>	<p>With this release, makers can build custom connectors in Microsoft Power Platform using OpenAPI v3 specifications. This enhancement significantly streamlines the connector development process, enabling more modern, flexible, and powerful integrations with external services and applications.</p> <p>With this new capability, you can directly import your OpenAPI v3 specification to create a connector—eliminating the need to downgrade your specs to the older OpenAPI v2 format. Whether you're working with RESTful APIs designed with the latest standards or maintaining compatibility with existing systems, this feature opens the door to faster and more scalable connector development.</p> <p>Once built, your v3-based connectors can be seamlessly integrated across the Power Platform ecosystem, including Microsoft Copilot Studio, Power Apps, and Power Automate.</p>

Core authoring

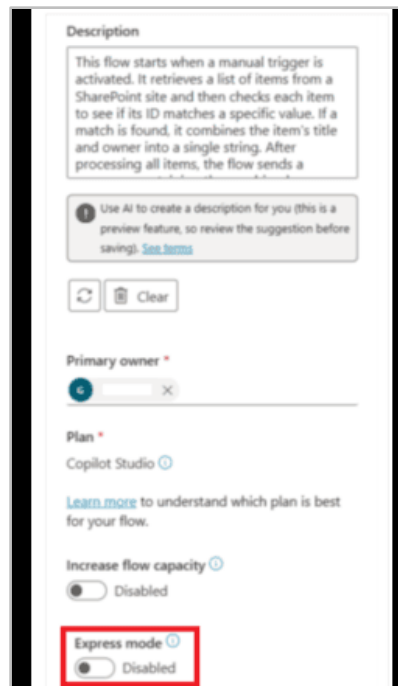
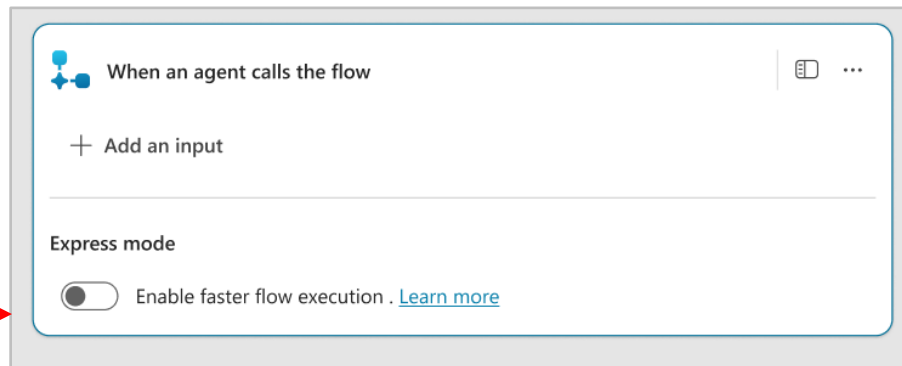
Copilot Studio

Item	N/U	Deadline	Benefits / Observations
Reassign an agent's owner with Power Platform API	UPDATED	March/2026	<p>When the original owner of an agent leaves the organization or changes roles, the agent becomes orphaned. Orphaned agents disrupt business processes and create security risks because no one manages the agent's settings and compliance requirements.</p> <p>With this feature, admins with the Tenant admin, Power Platform administrator, or Dynamics 365 Service Administrator roles can use Power Platform API to assign new owners to agents.</p> <p>The new owner needs a Copilot Studio license and must be a member of the environment where the agent is.</p>
Build advanced approvals	UPDATED	March/2026	<p>With advanced approvals, you can create approval workflows that match your organization's structure and business processes. You don't need to use complex manual workarounds to access new premium features – they're available automatically.</p> <p>The main features of advanced approvals include:</p> <ul style="list-style-type: none"> • Multi-stage approvals: Users set up complex approval processes with multiple stages. Each stage has its own set of stakeholders who make approval decisions. You can configure each stage separately to meet the specific needs of those stakeholders. This feature mirrors the real-world approval workflows of organizations. • Conditions/Conditional approvals: Users add conditions between stages to ensure flexible decision-making. Approvals are automatically approved, rejected, moved to another stage, or skipped based on whether specific conditions are met. This feature makes the approval process more adaptable and efficient.
Create the perfect prompt with help from Copilot	NEW	March/2026	<p>The draft with Copilot feature helps you write your prompts with prompt builder.</p> <p>The prompt builder makes it easy to get started. Just launch the draft with Copilot feature and describe what you want your prompt to do in natural language, in any supported language. For example, if you describe your prompt in French, the draft with Copilot feature generates the prompt instructions in French. Draft with Copilot then turns your intent into an effective, well-structured prompt that follows prompt engineering best practices.</p>
Configure content moderation level for prompts	NEW	February/2026	<p>The content moderation level slider in the prompt builder settings allows you to select the content moderation level for the prompt. The level allows your prompt to provide more answers. However, the increase in answers might affect the allowance of harmful content from the prompt.</p> <p>The moderation levels range from Low to High. The default moderation level for prompts is Moderate.</p>

Service, runtime, and governance

Copilot Studio

Item	N/U	Deadline	Benefits / Observations
Enable express mode for flows invoked by an agent or app	UPDATED	May/2026	<p>With express mode in Copilot Studio, agents and apps can receive responses from Power Automate flows more quickly and reliably, ensuring they function as intended.</p> <p>Flows in Copilot Studio that are initiated by an agent or app fail if the flow takes longer than two minutes to complete and respond back to the calling agent or app. In some situations, this timeout can result in the calling agent or app never receiving the information, thus impacting the usability of these agents and apps.</p> <p>Makers can enable express mode in Copilot Studio to achieve significantly faster flow run times. This feature not only helps flows complete within the two-minute window but also improves overall performance even when no timeout occurs.</p>





Dataverse

 [Link to documentation](#)



Build your low code hyperscale backend on Dataverse

Dataverse

Item	N/U	Deadline	Benefits / Observations
Build your agentic flows with Dataverse SDK for Python	UPDATED	April/2026	<p>The Microsoft Dataverse SDK for Python empowers data scientists and developers to build intelligent, compliant, and scalable agentic flows that integrate seamlessly with Dataverse. In the agentic age, where autonomous agents orchestrate workflows and act on behalf of users, the SDK provides the essential tools to interact programmatically with enterprise data platforms.</p> <p>Key capabilities can include:</p> <ul style="list-style-type: none"> • Autonomous data agents that can query, update, and evaluate data quality • Form prediction and autofill • Support for agentic primitives like Model Context Protocol (MCP) and Agent-to-Agent (A2A) collaboration
Guided table selection for first-time Dataverse sync	UPDATED	April/2026	<p>Guided table selection introduces first-time table selection during initial Dataverse-to-Fabric sync setup, making table scoping a core part of the onboarding flow rather than a post-setup correction. This first-time table selection directly addresses confusion and cost issues caused by today's default "sync everything" behavior. Table selection at initial sync allows customers to explicitly choose which Dataverse tables are synced before any data movement begins, providing these benefits:</p> <ul style="list-style-type: none"> • Elimination of the current workflow where customers must first sync all tables and then manually unselect tables. This process is error-prone and difficult, especially when dealing with environments containing dozens or hundreds of tables. • Cost-aware onboarding, ensuring storage and Fabric artifacts are created only for selected tables, reduces unnecessary data duplication and storage spend from day one. • A simpler, more intuitive experience for first-time admins, aligned across Fabric and Power Apps entry points, reduces cognitive load and improves time-to-value.

Extend your copilots with knowledge and actions

Dataverse

Item	N/U	Deadline	Benefits / Observations
<p>Enable makers to create Dataverse AI prompt columns</p>	<p>NEW</p>	<p>May/2026</p>	<p>Information workers face an overwhelming amount of data and spend a lot of time reading and processing it every day. They also spend a lot of time preparing responses to inquiries and organizing information for analysis.</p> <p>With this feature, you can easily generate data and summarize it into information. You can prioritize responses based on urgency (sentiment), categorize responses (classify), extract pertinent info like email addresses and phone numbers, and generate replies by using Microsoft Dataverse generative AI prompts. You can define and extend this enriched information as part of the record and query it.</p>
<p>Review security role descriptions and definitions</p>	<p>UPDATED</p>	<p>January/2026</p>	<p>With this feature, admins can view security role information inside the Power Platform admin center, including the security role description, which solutions and apps the security role applies to, and respective, core table privileges. This information is visible in the settings of each environment.</p> <p>This feature provides the following benefits:</p> <ul style="list-style-type: none"> • Eliminates redundant, manual updates in documentation. • Enables self-documenting security roles, improving transparency and compliance. • Prepares us for agent-driven automation, where descriptions and summaries can be generated and validated programmatically.

Finance and operations cross application integration

Dataverse

Item	N/U	Deadline	Benefits / Observations
Monitor data management framework with Azure Monitor Application Insights	UPDATED	June/2026	<p>Data management framework telemetry integration for Dynamics 365 finance and operations apps enables organizations to gain deeper visibility into data management executions, such as import and export jobs, by streaming telemetry directly into the customer's own Azure Application Insights instance.</p> <p>With this integration, customers can:</p> <ul style="list-style-type: none"> • Monitor import and export data management functions with start and end times. • Monitor job status from source to staging and staging to target. • Monitor failures with error messages at a granular level. • Set up alerts and dashboards for proactive monitoring. • Accelerate issue resolution.
Monitor batch workloads with Azure Monitor Application Insights	UPDATED	January/2026	<p>Batch telemetry integration for Dynamics 365 finance and operations apps enhance observability by streaming detailed telemetry into Azure Monitor Application Insights, allowing organizations to monitor and diagnose batch workloads with precision. This feature introduces telemetry signals that capture batch job start and stop times, throttling events, and thread availability, helping teams assess execution duration and resource constraints. It also includes telemetry for batch queue sizes across priority levels, enabling visibility into scheduling bottlenecks, and provides detailed failure diagnostics with call stack and exception metadata for failed batch tasks. These insights empower operations teams and developers to proactively monitor performance, troubleshoot issues, and optimize scheduling through dashboards and alerts.</p> <p>Batch signals that have been introduced under Monitoring and Telemetry in Dynamics 365 are:</p> <ul style="list-style-type: none"> • Batch start time • Batch stop time • Batch throttling • Batch failure • Batch queue • Batch threads

Improved enterprise experiences in Power Platform

Dataverse

Item	N/U	Deadline	Benefits / Observations
<p>Improve bulk delete user experience</p>	<p>UPDATED</p>	<p>May/2026</p>	<p>As customers scale their data management operations, bulk delete must be predictable, transparent, and safe to operate across environments. In this release, we enhance bulk delete with an improved error handling experience and solution aware configuration support, delivering a more consistent, reliable, and enterprise-ready data cleanup workflow.</p> <p>This release focuses on two core improvements that directly address admin pain points around visibility, consistency, and operational risk when managing bulk delete jobs at scale.</p> <p>Key improvements:</p> <ul style="list-style-type: none"> • Actionable error handling with an intuitive UI. Bulk delete now provides clear, job- and record-level error details through an intuitive user interface. Instead of generic failures, admins can quickly understand what went wrong and why, enabling faster troubleshooting, fewer reruns, and more efficient resolution of large-scale deletion jobs. • Solution aware bulk delete for consistent multi-environment operations. Bulk delete configurations are now solution aware, allowing deletion jobs to be safely transported across environments. This ensures consistent behavior from development to production, reduces manual reconfiguration, and significantly lowers the risk of misconfiguration in higher environments, delivering a more reliable and governed operational experience.
<p>Restore deleted records within a specified timeframe</p>	<p>UPDATED</p>	<p>April/2026</p>	<p>Managing data in Dataverse often involves deleting records—whether through routine processes, bulk operations, or accidental actions. Until now, recovering deleted records has been difficult or, in many cases, impossible.</p> <p>The feature addresses this challenge by providing a simple, reliable way to restore deleted data. It allows admins to recover table records from any type of delete scenario—manual, automated, single, multiple, or bulk—within a configurable retention period of up to 30 days.</p> <p>Key highlights:</p> <ul style="list-style-type: none"> • Comprehensive recovery: Restore deleted records regardless of how they were removed. • Flexible access: Restore data through both the Dataverse user interface and APIs/SDK. • Configurable retention: Define how long deleted records remain available for recovery, up to a maximum of 30 days. • Admin-controlled enablement: Administrators must enable the feature at the organization level to take advantage of recovery capabilities.

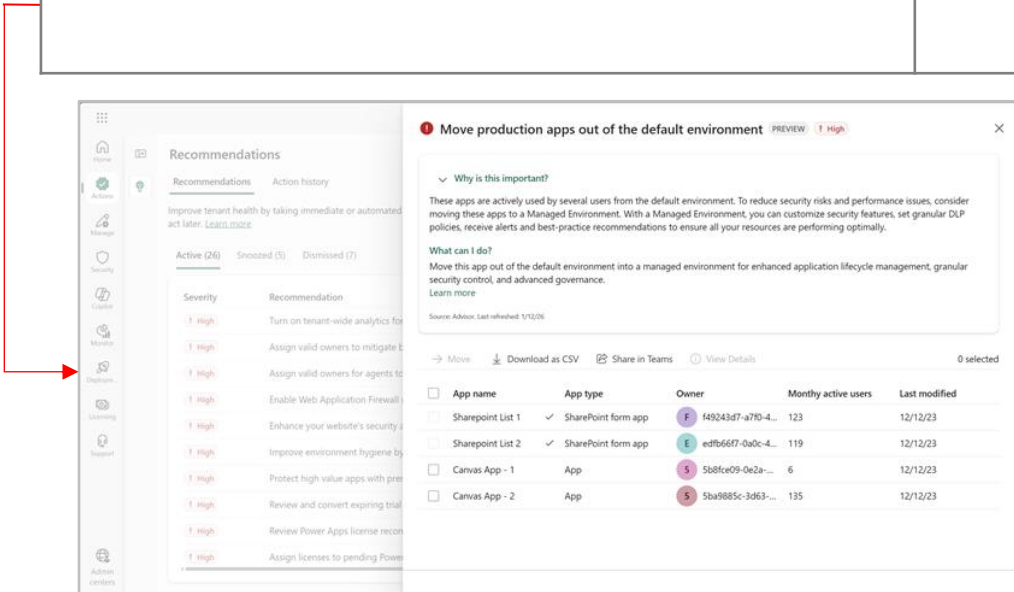


Governance and Administration

Enterprise scale administration

Governance and Administration

Item	N/U	Deadline	Benefits / Observations
Automate governance with Agentic Center of Enablement	UPDATED	June/2026	<p>Agentic Center of Enablement (Agentic CoE) introduces three AI-powered agents to the Power Platform admin center that automate governance workflows.</p> <ul style="list-style-type: none"> The Highlights agent provides daily automated snapshots of key tenant activity, surfacing important changes so you stay informed at a glance. The Insights agent continuously scans your tenant to proactively identify and prioritize issues across security, compliance, performance, and adoption. The Action Plan agent converts insights into comprehensive remediation plans that you review and approve before execution. <p>All agent activity is recorded for a complete audit trail.</p>
Move apps out of the default environment	UPDATED	April/2026	<p>This feature addresses a common challenge where the default environment in Power Platform becomes cluttered with unmanaged apps, agents, and flows, leading to governance issues and security risks. The new recommendation in the Power Platform admin center enables administrators to identify and migrate canvas apps and SharePoint forms from the default environment to designated Managed Environments. Through a guided wizard, administrators can review flagged apps, select a destination environment, and choose how to handle the original app—keeping it as-is, quarantining it, or deleting it.</p>



Enterprise scale administration

Governance and Administration

Item	N/U	Deadline	Benefits / Observations
<p>Search your inventory of custom agents from Copilot Studio</p>	<p>UPDATED</p>	<p>March/2026</p>	<p>The new Power Platform admin center gives IT administrators a single view of all custom agents they created in Microsoft Copilot Studio. You can access this inventory only from the Copilot Studio page in the Manage area of the admin center. This tool changes daily IT operations in several ways:</p> <ul style="list-style-type: none"> • Prevent orphaned agents: Easily find custom agents created by users who left. • Ensure compliance: Quickly find custom agents running in geographies that aren't approved to keep compliance policies. • Keep a tidy tenant: Find and delete inactive custom agents to reduce clutter. • Improve support response: Quickly find custom agents referenced in support tickets to help speed up response times.

Licensing and capacity

Governance and Administration

Item	N/U	Deadline	Benefits / Observations
<p>Discover and foster Power Platform adoption with the new Usage page</p>	<p>UPDATED</p>	<p>June/2026</p>	<p>The Usage page is a new, reliable, in-product usage analytics experience in the Power Platform admin center. This experience provides authoritative usage metrics for Power Apps, Power Automate, and Copilot Studio. It provides daily and monthly aggregated views with trendlines.</p> <p>Feature Details</p> <p>The Usage page in the Power Platform admin center helps you:</p> <ul style="list-style-type: none"> • Track adoption and engagement per product and per app, flow, and agent. • Identify most-used apps, flows, and agents. • Identify app, flow, and agent creators of the most-used resources. • Understand where usage exists, including environments and products, and how it's trending.

Security and compliance

Governance and Administration

Item	N/U	Deadline	Benefits / Observations
Manage agent security with enhanced admin controls	NEW	June/2026	<p>This feature introduces advanced governance controls that allow administrators to configure security and compliance settings at the environment or environment group level within the Power Platform admin center.</p> <p>Technically, these controls work by configuring new settings for agent sharing, turning off anonymous access endpoints, and enforcing the use of approved authentication providers through integrated identity management. The system applies these configurations through environment-level policies that are validated during agent deployment and runtime, ensuring consistent enforcement across all environments.</p> <p>From a business perspective, these controls significantly reduce the risk of data exfiltration and unauthorized access, aligning with organizational security and compliance standards. By centralizing governance, organizations can maintain regulatory compliance and prevent costly data breaches. These controls also ensure that agent development adheres to internal and external audit requirements, which ultimately protects brand reputation and reduces operational risk.</p>
View sensitivity labels in connectors	UPDATED	June/2026	<p>Customers can use Power Platform connectors and Copilot connectors to transfer Microsoft Purview Information Protection sensitivity labels for items that users already labeled. This feature ensures adequate data governance for extensibility in agentic scenarios.</p> <p>This feature gives admins the power to govern data use for data that Power Platform connectors transfer by making Microsoft Information Protection labels visible. You can show and enforce these labels across Power Platform experiences, starting with Microsoft Copilot Studio.</p>
View sensitivity labels in Microsoft Copilot Studio	UPDATED	June/2026	<p>The Purview admin enables autolabel for desired environments through the Purview Data Map. Then, Dataverse columns are automatically labeled.</p> <p>The labels appear across Copilot Studio experiences. This feature includes the following scenarios:</p> <ul style="list-style-type: none"> • When you select a Dataverse knowledge source in Copilot Studio. • When the labeled information appears in a response as part of the citation.

Security and compliance

Governance and Administration

Item	N/U	Deadline	Benefits / Observations
<p>Permit or deny guest access to an environment</p>	<p>UPDATED</p>	<p>May/2026</p>	<p>When an admin configures this environment setting, guests can't connect to data sources in the environment. Guests can't perform any maker actions, and they can't use any apps or flows shared with them. Admins implement this security within the Power Platform admin center without using controls like conditional access or continuous access evaluation.</p> <p>This feature includes an environment setting that you use to permit or deny guest access to an environment. With this feature, admins block guests from accessing environments and prevent guests from establishing new connections. Admins also prevent guests from making new API calls and turn off any existing connections. Admins turn off connections and resources without deleting them.</p>
<p>Take advantage of expanded Virtual Network support</p>	<p>UPDATED</p>	<p>April/2026</p>	<p>Power Platform now supports service endpoints and data export for Virtual Networks. With this enhancement, you can set up secure, private, outbound connectivity from Power Platform to resources in your Virtual Network. This feature improves security for connections to external data sources from Power Apps, Power Automate, and Dynamics 365 apps.</p> <p>This feature offers the following benefits:</p> <p>Enhanced configuration experience: Enterprises can view the number of available and used IP addresses in a subnet. They can also troubleshoot configuration issues when the Virtual Network isn't configured on a Power Platform environment.</p> <p>Extended connectors support for Virtual Networks: Support is now available for more connectors, including Azure AI Search and data export to Application Insights.</p>



Power Pages

Power Pages – Administration and governance

Item	N/U	Deadline	Benefits / Observations
Track Power Pages performance and usage with Monitor hub	Updated	June/2026	Power Pages is integrated into the Monitor hub. This integration empowers site owners, makers, and administrators to access actionable performance and usage insights directly within the Monitor area of the Power Platform admin center.
Enhance governance for non-production site visibility	Updated	March/2026	This feature ensures your non-production sites stay secure by blocking public visibility changes without admin approval. You maintain compliance and data protection while giving makers the freedom to experiment safely.

Power Pages – Design studio

Item	N/U	Deadline	Benefits / Observations
Configure authentication with security agent	Updated	June/2026	<p>The security agent is available directly within the security workspace in Power Pages design studio. Makers can open the security agent tab to access the embedded chat panel and security tools. From there, they can interact using natural language to review risks, understand configurations, and take guided actions.</p> <p>The agent assists with both authentication and authorization setup. It guides makers through configuring identity providers, reviewing authentication settings, and strengthening login protections. Based on the site's setup, it can recommend improvements such as securing token configurations, validating redirect settings, or tightening session-related controls.</p>

Power Pages – Professional developer experiences

Item	N/U	Deadline	Benefits / Observations
Buid Power Pages sites faster with AI coding tools	Updated	June/2026	<p>Pro-developers can now accelerate Power Pages site development by leveraging AI that truly understands the platform. Unlike generic generative AI code generation tools, these skills are purpose-built for Power Pages; it comprehends web roles, table permissions, web APIs, and other platform-specific components out of the box. This deep integration means fewer iterations, less manual correction, and faster time-to-production.</p> <p>These skills integrate with generative AI code generation tools, allowing you to describe your site requirements in natural language and receive contextually accurate code that aligns with Power Pages architecture and security patterns.</p>
Enable secure server-side logic in Power Pages	Updated	April/2026	<p>This feature empowers you as a developer or maker to build more secure, scalable, and integrated websites without relying on complex client-side workarounds. By moving logic to the server, organizations save development time, reduce security risks, and simplify API integrations. This leads to faster delivery of robust solutions, lower maintenance costs, and improved compliance with data protection standards.</p> <p>Feature Details Now Power Pages makers can securely execute server-side JavaScript within their sites. This feature enables integration with external services, advanced data operations, and custom business logic without exposing sensitive credentials in client code.</p>
Buid modern single-page applications	Updated	January/2026	<p>Power Pages supports creation and deployment of single-page applications (SPAs), letting you build fully customized, high-performance web experiences using familiar front-end frameworks like React. You can create modern, component-driven interfaces that integrate with Power Pages while leveraging the platform's security, data integration, and hosting capabilities.</p>

Server logic secured by table permissions and web roles



Questions



Thank you!



info@alfapeople.com



DK: +45 70 20 27 40
DE: +49 5221 28 44 00
CH: +41 43 355 30 60
US: +1 (855) 500-1447
CA: +1 289 291-7769